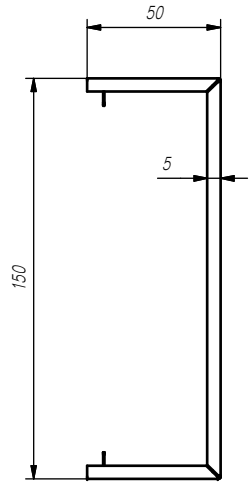
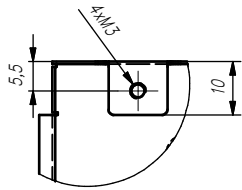
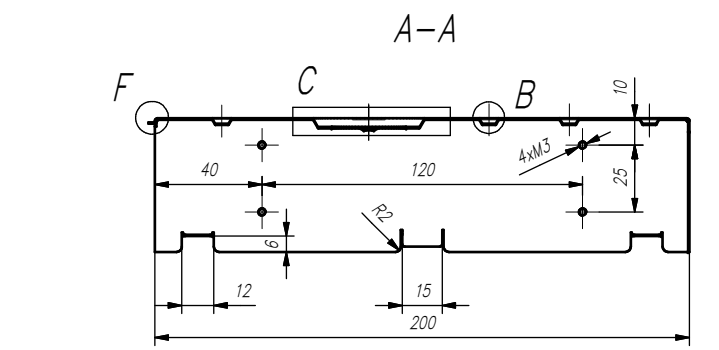
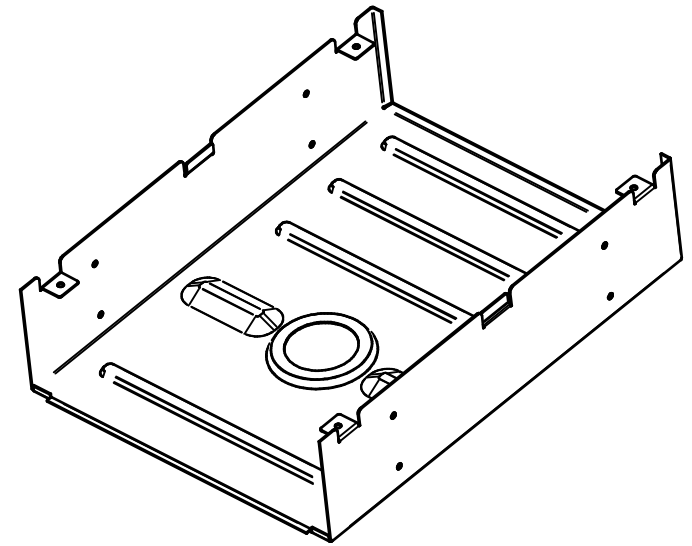
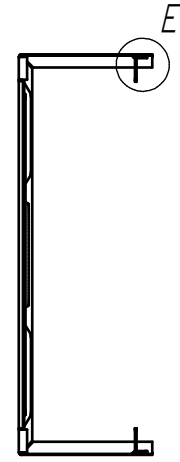
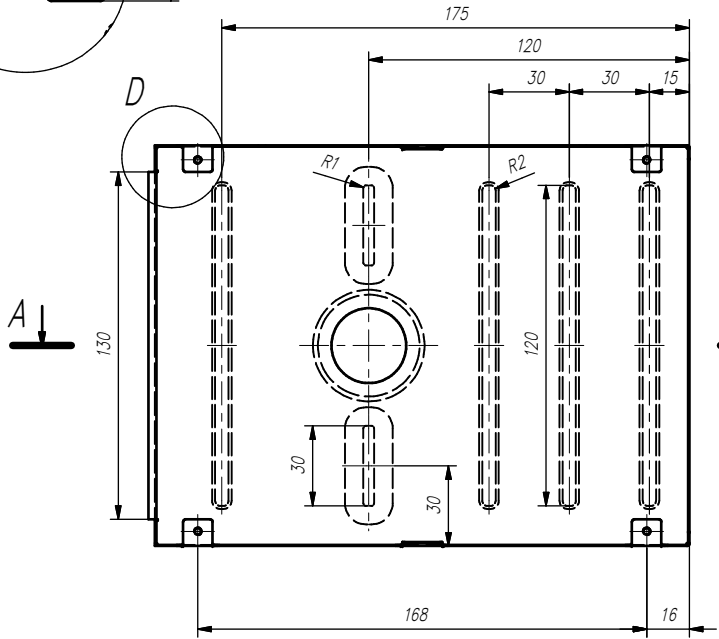
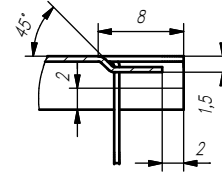


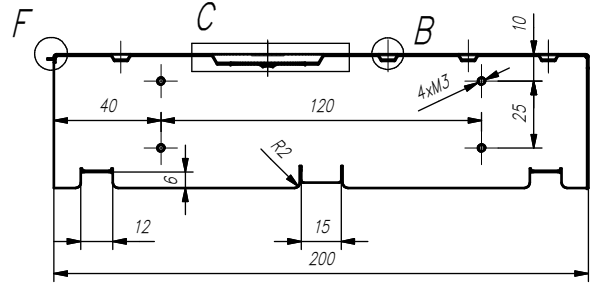
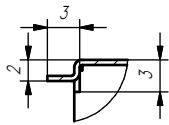
D 1:1



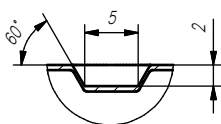
E 2:1



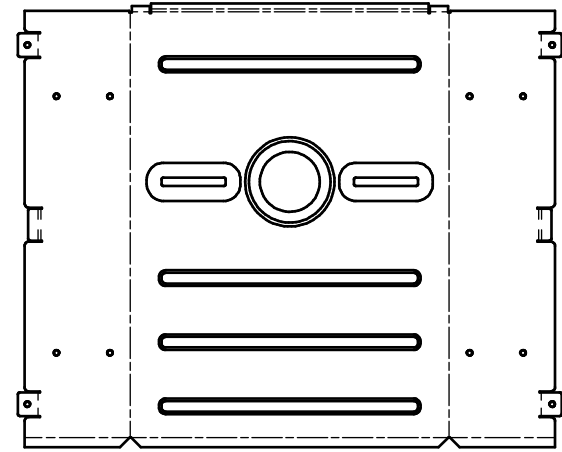
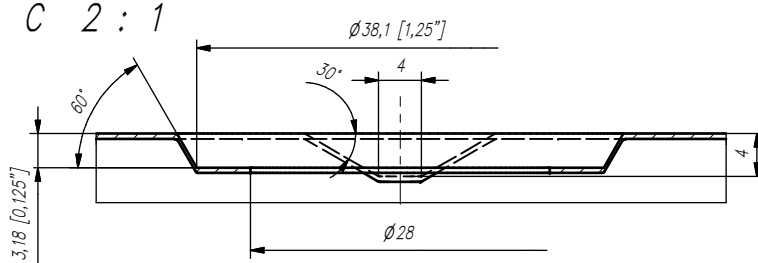
F 2:1



B 2:1



C 2:1



Grubość blachy 0,5

Rysunek niekompletny, dla potrzeb dydaktycznych

| | | | | |
|-----------------|-----------------|-----------|----------|--------|
| Projektował: BS | 2010-05-27 | Podziałka | Materiał | Masa |
| Rysował: BS | Data 2010-05-27 | Podpis | 1:2 | 1.4301 |
| Sprawdził: | | | Format | Arkusz |
| Zatwierdził: | | | A3 | 1 / 1 |

Politechnika Rzeszowska
im. Ignacego Łukasiewicza
Wydział Budowy Maszyn i Lotnictwa
Katedra Konstrukcji Maszyn

INV-BL-02
Numer rysunku: Obudowa

© Inet 1275128kapiOchotkovicz.pl